

# **Sri A.S.N.M. Government College (Autonomous)**

**(NAAC Re-accredited by 'B' Grade with 2.61 CGPA)**

**Palakol, West Godavari District – 534260**

## **FEEDBACK ANALYSIS - STUDENTS 2018-2019**

Feedback on curriculum is a regular phenomenon in Sri A. S. N. M Government College as it aids in the quality sustenance and enrichment of the curriculum. The college updates the curriculum periodically by closely adhering to the policies and guidelines issued by the concerned regulatory authorities.

Besides catering to the needs of the students and the demands of the employers, frequent meetings are convened wherein the Management, Controllers of Examinations, Academic Coordinator of Curricular Affairs, IQAC Coordinator and the Heads of the Departments discuss Curriculum Based issues. Structured Feedback on individual courses and the syllabus of respective departments are collected semester wise from Students, Teachers, Employers and Alumni. The collected feedback is analyzed by each department. Based on the stakeholders' suggestions and recommendations, the curriculum is designed, revised and new skill-oriented courses are introduced from time to time in the Board of Studies.

The Draft Syllabus is revised in the Board of Studies and finalized. The suggestions of the University Nominees, the Subject Experts, Industrialists and Alumni are incorporated and the Action Taken Report is presented in the next Board of studies. The curriculum is then

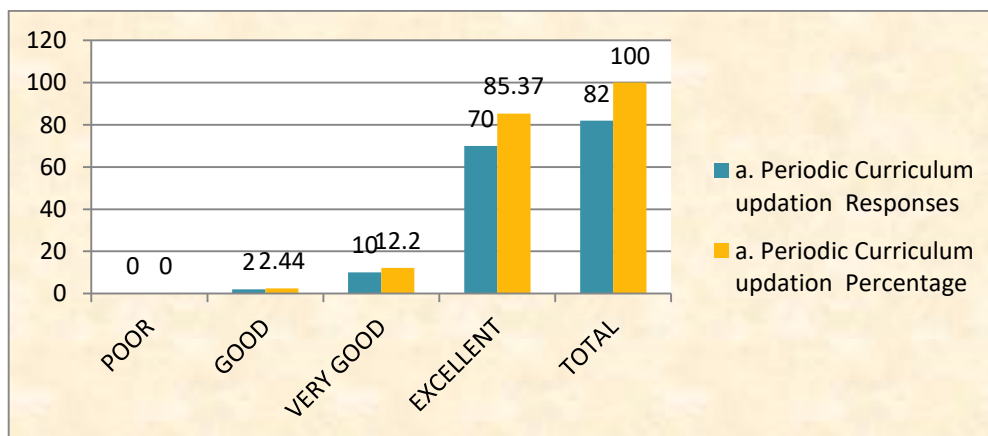
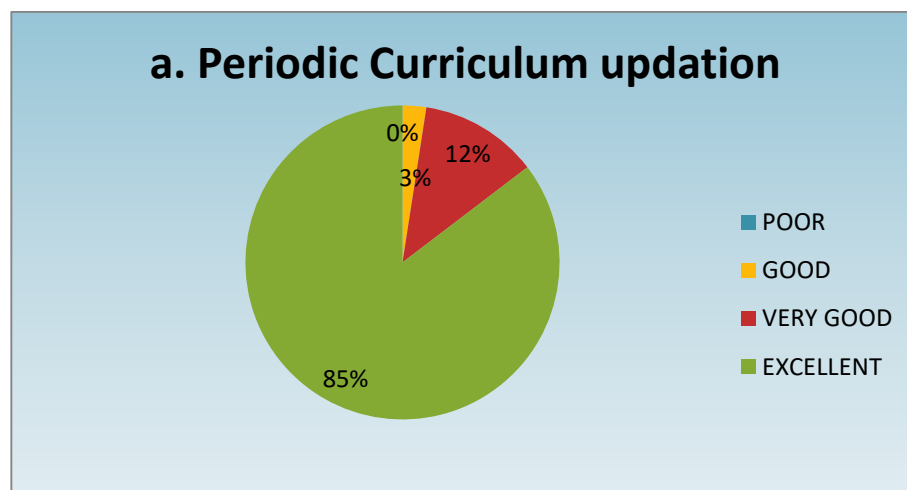
approved in the Academic Council and the Governing Body. The Suggestions brought forth by the distinguished members of the Academic Council and the Governing Body are realized and Action taken Report are presented and documented in the minutes of the Subsequent Academic Council and Governing Body.

Structured Feedback on individual courses and syllabus is obtained from the students and course teachers the end of each year; from the alumni during the Annual Alumni Meet and from the Industrialists and Employers during formal meetings. The stakeholders respond to Questionnaires with 09 questions on syllabus on the scales as stated herein:

 Excellent	- E
 Very Good	- VG
 Good	- G
 Poor	- P

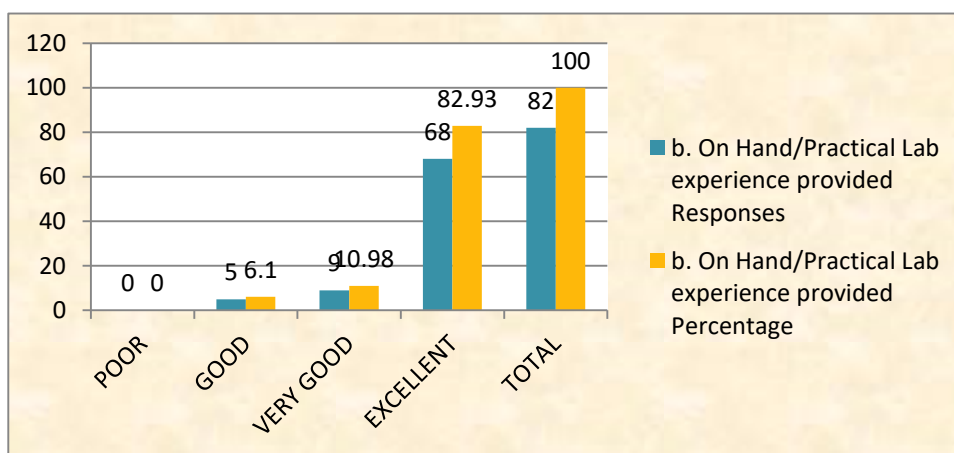
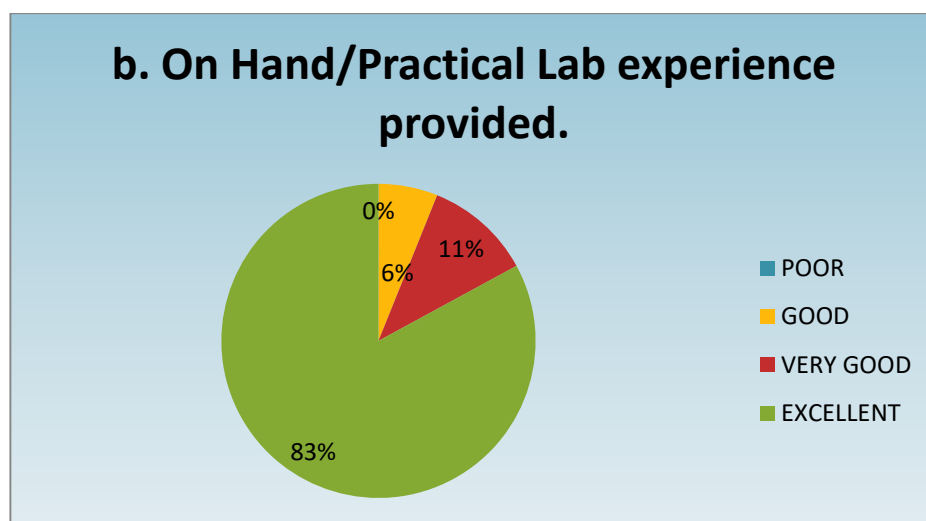
**Total Number of Respondent: 82**

a. Periodic Curriculum updation		
Options	Responses	Percentage
POOR	0	0
GOOD	2	2.44
VERY GOOD	10	12.20
EXCELLENT	70	85.37
<b>TOTAL</b>	<b>82</b>	<b>100</b>



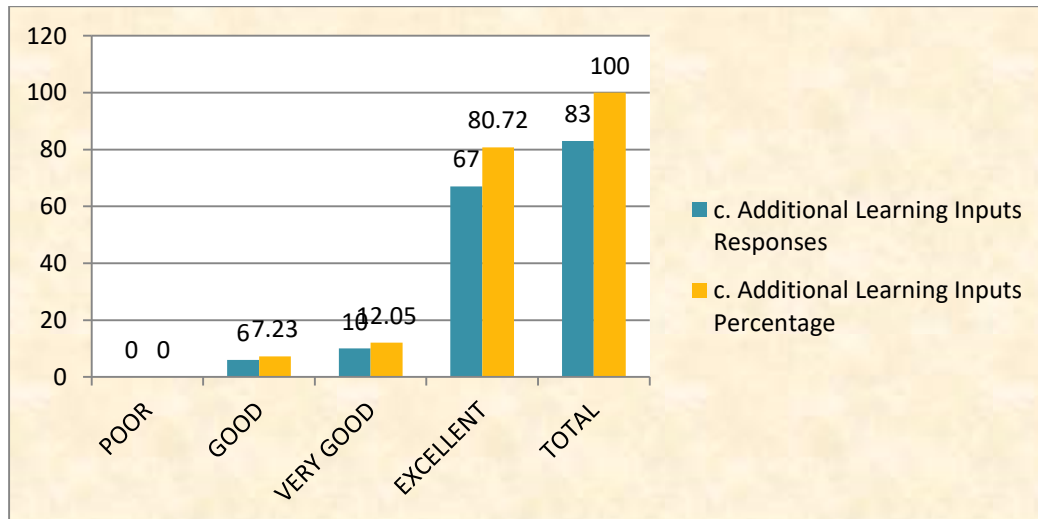
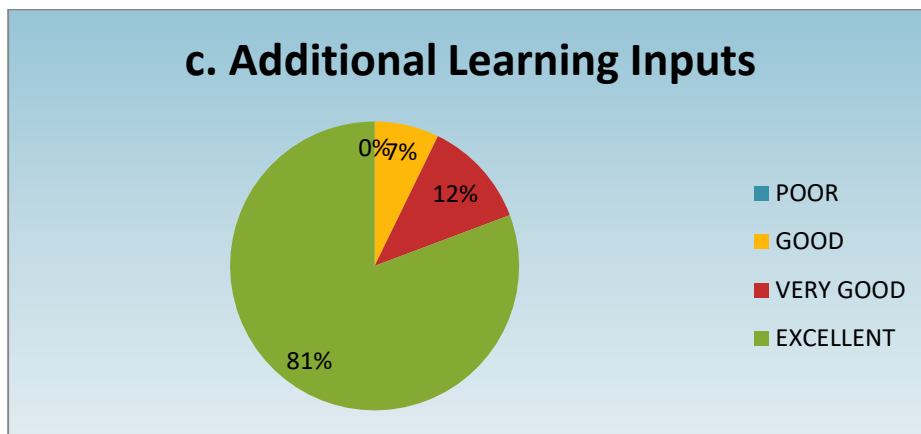
Majority of the students have given periodic curriculum is **excellent** i.e. **85%** very few are expressed that not relevant to the present curriculum updation i.e 1%.

b. On Hand/Practical Lab experience provided		
Options	Responses	Percentage
POOR	0	0
GOOD	5	6.10
VERY GOOD	9	10.98
EXCELLENT	68	82.93
<b>TOTAL</b>	<b>82</b>	<b>100</b>



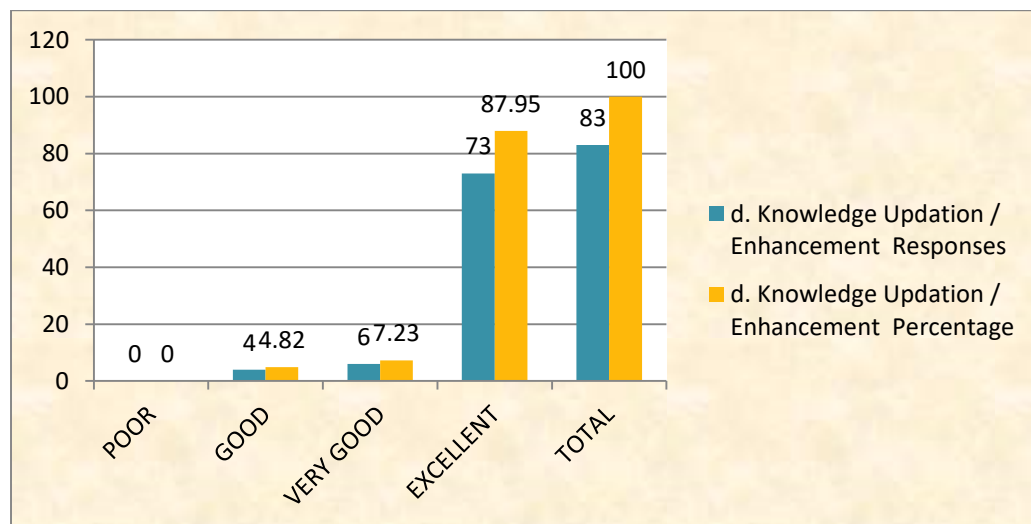
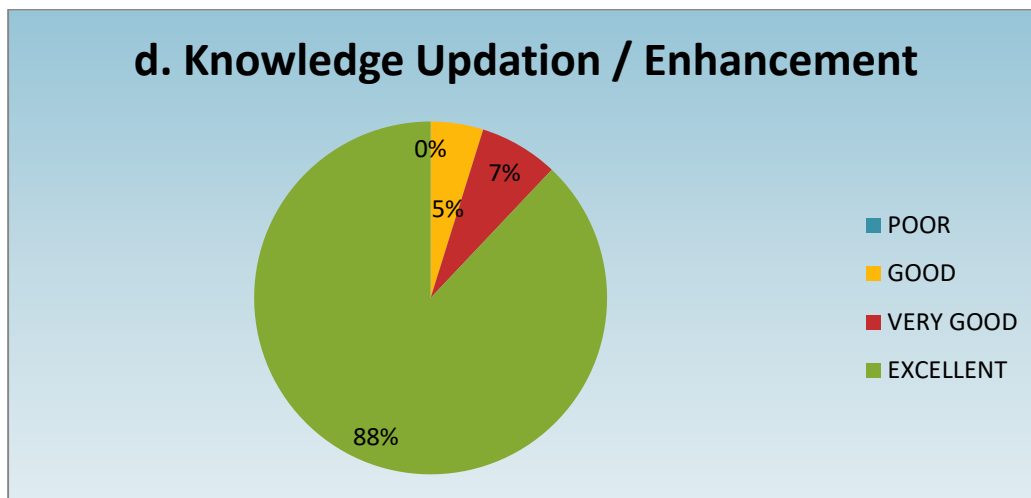
Most of the students they felt happy with Labs/practical experiences **82% of students given Good rating**, 6% of students are given good response are and no one given as poor response.

c. Additional Learning Inputs		
Options	Responses	Percentage
POOR	0	0
GOOD	6	7.23
VERY GOOD	10	12.05
EXCELLENT	67	80.72
<b>TOTAL</b>	<b>83</b>	<b>100</b>



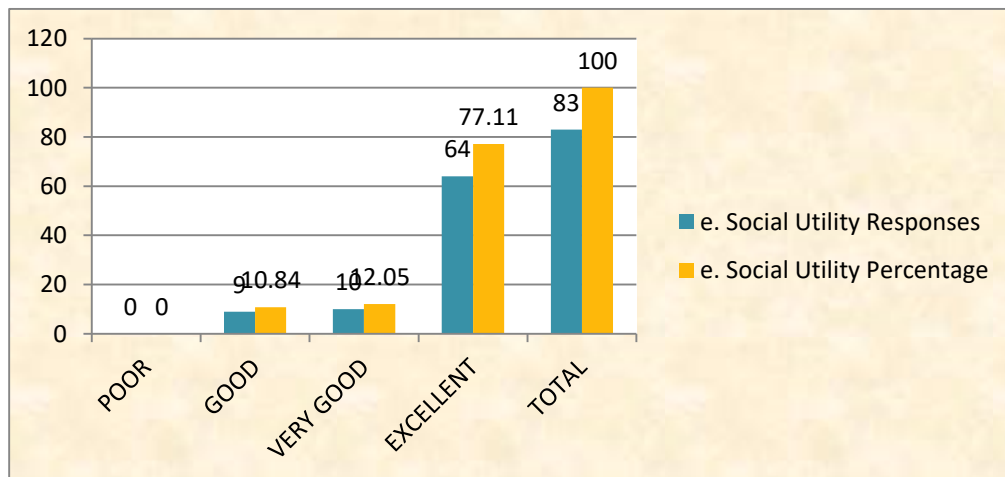
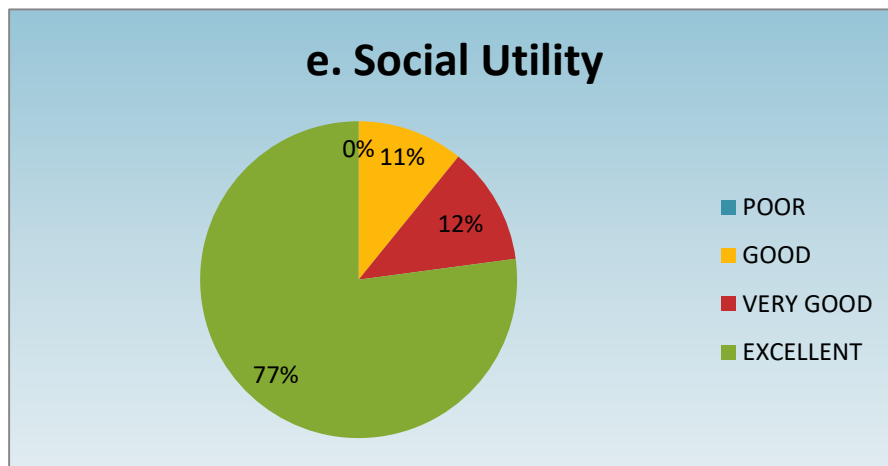
The design of the additional learning inputs are attracted **by 80 % given excellent** response and No one given as poor Response.

d. Knowledge Updation / Enhancement		
Options	Responses	Percentage
POOR	0	0
GOOD	4	4.82
VERY GOOD	6	7.23
EXCELLENT	73	87.95
<b>TOTAL</b>	<b>83</b>	<b>100</b>



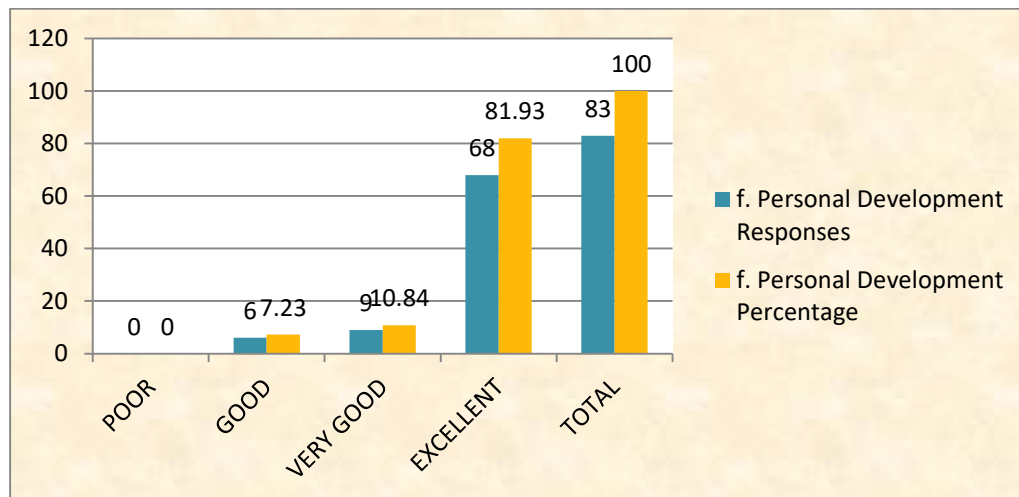
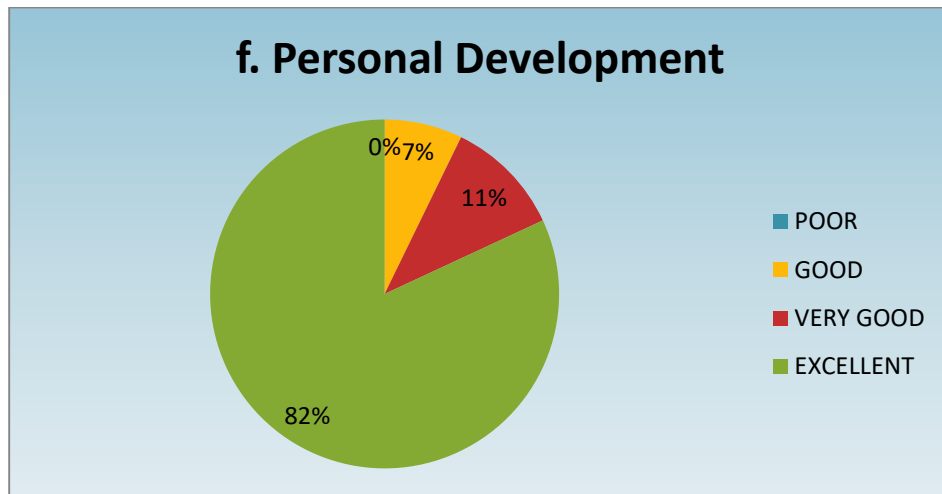
The students have shown so much interest in learning innovative technology skills **87% are given as excellent feedback**. No one given as poor response.

<b>e. Social Utility</b>		
<b>Options</b>	<b>Responses</b>	<b>Percentage</b>
POOR	0	0
GOOD	9	10.84
VERY GOOD	10	12.05
EXCELLENT	64	77.11
<b>TOTAL</b>	<b>83</b>	<b>100</b>



Students have imbibed social utility services to sensitize them opted more than 77% and given, excellent and no one given as poor response

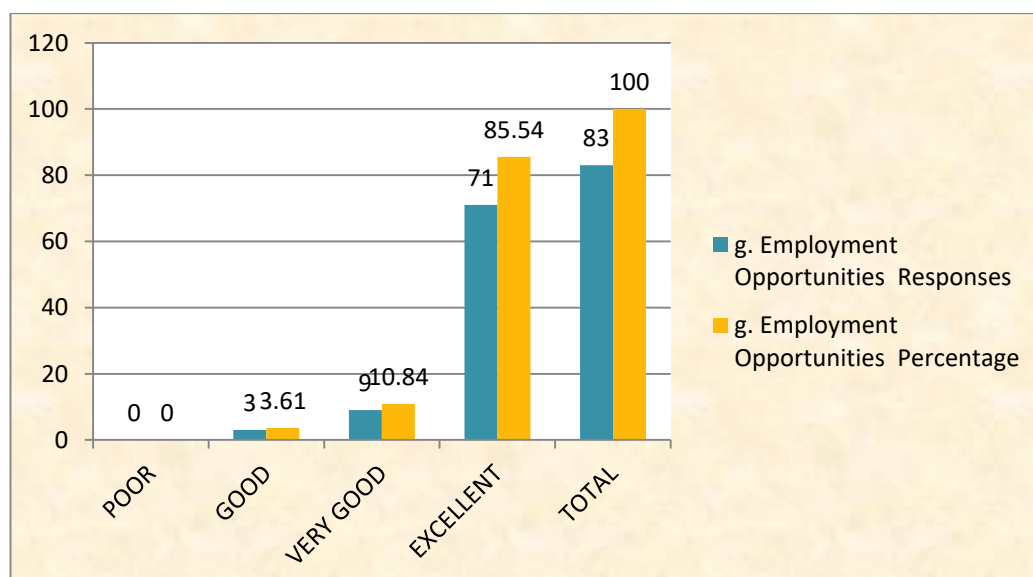
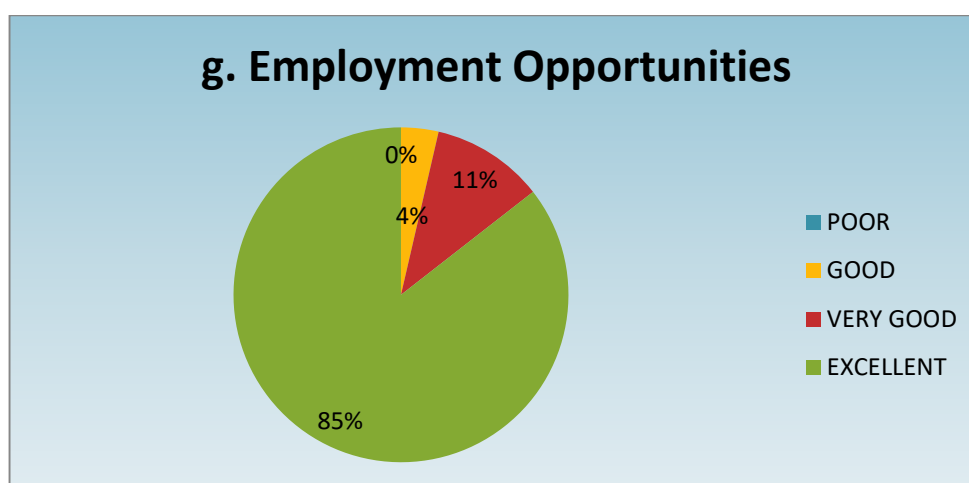
f. Personal Development		
Options	Responses	Percentage
POOR	0	0
GOOD	6	7.23
VERY GOOD	9	10.84
EXCELLENT	68	81.93
<b>TOTAL</b>	<b>83</b>	<b>100</b>



As a part of their career 81% students have chosen this is very useful. No one given as poor response.

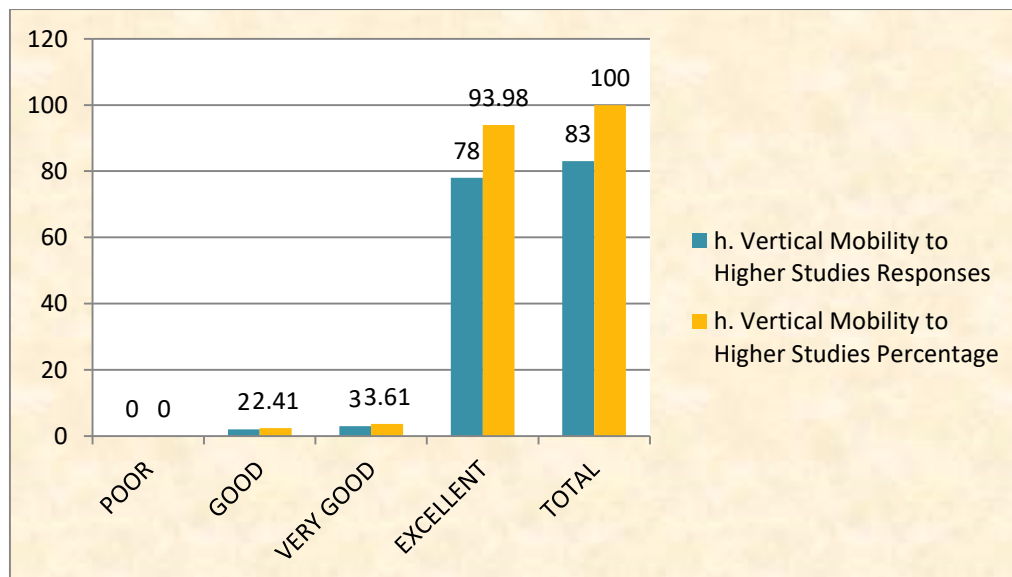
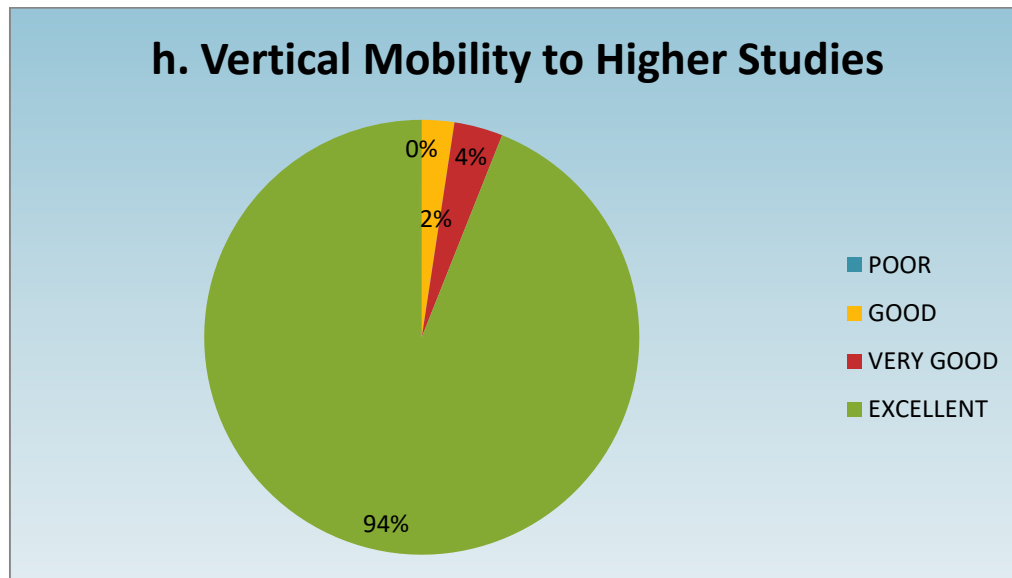


g. Employment Opportunities		
Options	Responses	Percentage
POOR	0	0
GOOD	3	3.61
VERY GOOD	9	10.84
EXCELLENT	71	85.54
<b>TOTAL</b>	<b>83</b>	<b>100</b>



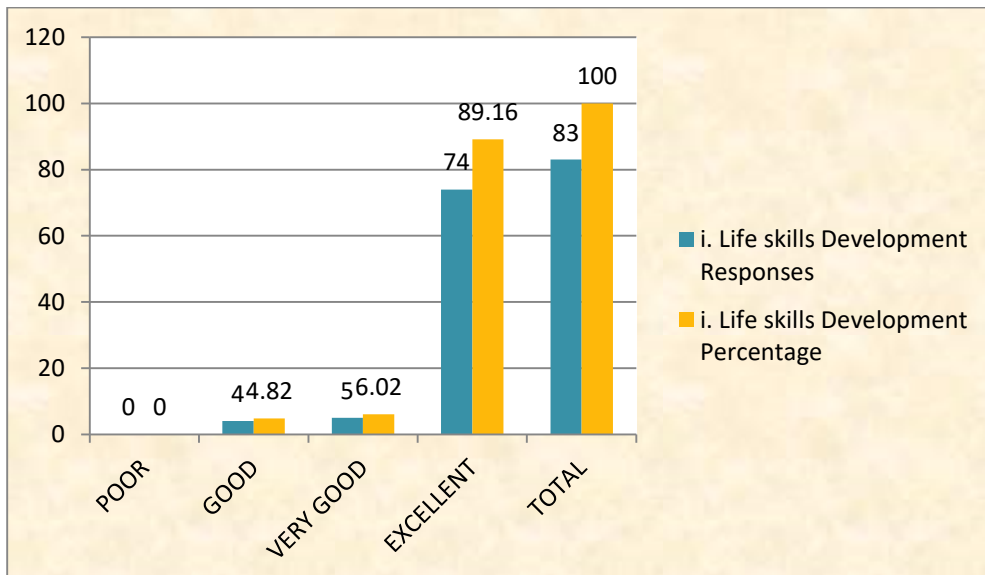
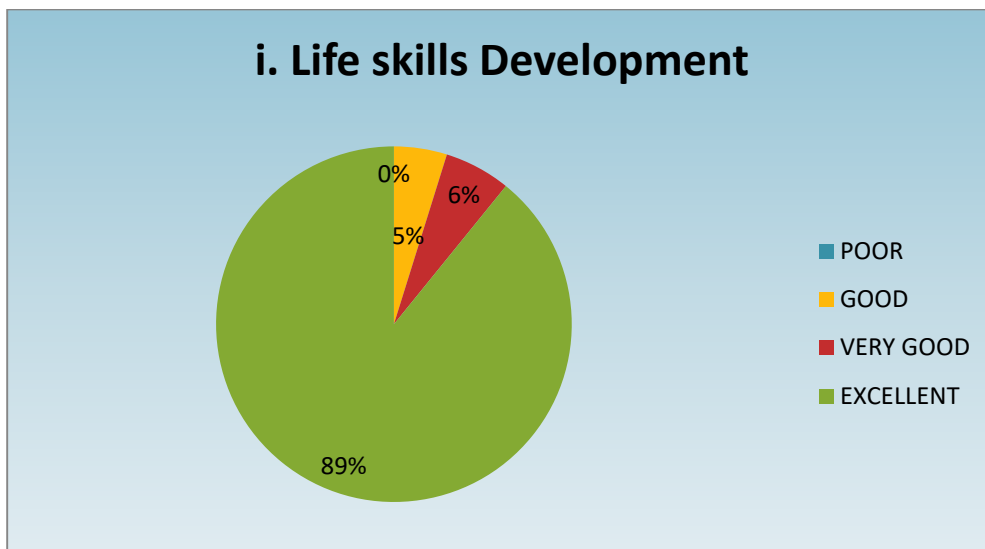
The dreams were fulfilled by conducting JKC job drives and employment opportunities 85% were given excellent feedback, no one given as poor response.

h. Vertical Mobility to Higher Studies		
Options	Responses	Percentage
POOR	0	0
GOOD	2	2.41
VERY GOOD	3	3.61
EXCELLENT	78	93.98
<b>TOTAL</b>	<b>83</b>	<b>100</b>



The students have concentrated to get admission in PG courses were satisfied 93% given excellent response.

i. Life skills Development		
Options	Responses	Percentage
POOR	0	0
GOOD	4	4.82
VERY GOOD	5	6.02
EXCELLENT	74	89.16
<b>TOTAL</b>	<b>83</b>	<b>100</b>



Students studied Life Skill Courses in their curriculum, 89% given excellent response, and no one given good reponse.